



LIAISON[®] 

LIAISON[®]X

INNOVATION TO MEET YOUR NEEDS





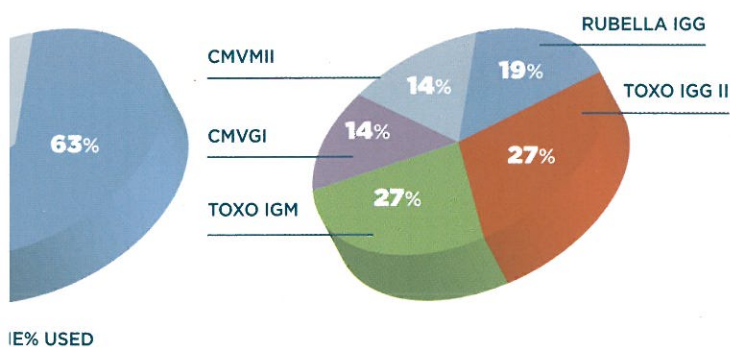
Throughput

Throughput is optimized by splitting the pipetting phases of Reagents and Samples into different cycles. The technical solutions adopted by LIAISON® XL, as the double washing capacity, the incubator that may host up to 100 assays and the optimization of the assay process, can keep the **throughput of system as high as possible**.

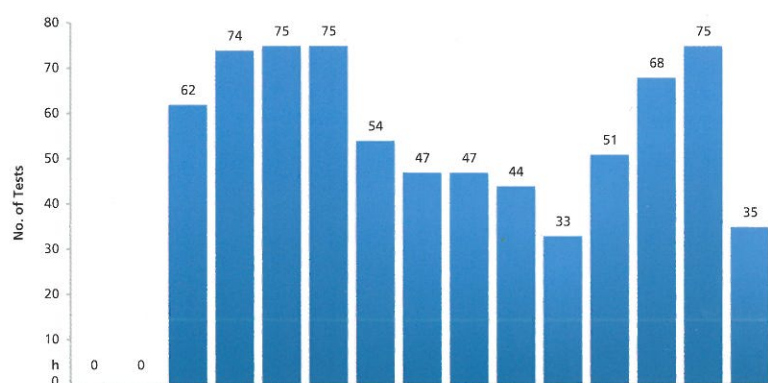
Software

The simulator software, **XLAB**, allows DiaSorin specialist to tailor efficient organization based on your workflow.

RESULTS DISTRIBUTION



RESULTS DISTRIBUTION



COMPACT AND EFFICIENT DESIGN

Variable loading

Variable Sample Tips
Reaction Cuvettes
Continuous loading.

Reagent Area

Continuous loading
Single tube through
V[®] XL sample racks.
20 sample.
Different tube sizes
allowed.
Sample identification
sizes samples.

Reagents

Continuous loading
Easy replacement
Click-on cup
technology.

Touch Screen Monitor

Reagent Area

Continuous loading
for all Integral reagents.

Table

Under the reagent area
to place tiny items
on the table for
instant aid to the user
(max weight capacity is
2,5 Kg/ 5.5 lbs)

Cabinet Area

System liquid tanks in
continuous loading.
Solid and liquid waste allows
continuous unloading.





Integral Technology

LIAISON® XL utilizes **chemiluminescence technology** with magnetic microparticles, the same proven quality technology as **LIAISON®**.

Components are **ready to use** in one Integral.

Of the Integrals, f.e. all the Infectious Disease tests, **include the calibrators**.

Integral technology with long term of stability on board, improves efficiency and results standardization.

Integrals area

Loading bay for reagents allows a **continuous loading** of the LIAISON® XL system with reagents in the form of Integrals. The operator will be driven by a led-light in order to optimize the load and unload activities. **Up to 25 Integrals** and up to 4 ancillary reagents can be used at the same time. The high number of reagents and consumable loaded on board, simplifies the operator activities and **improves the walk away** time. Integrals can be loaded directly in one of the 25 lanes according to the specifications of the LIAISON® XL, **multiple of the same Integral can be loaded** at the same time if needed. After the exhaustion of one Integral, **the instrument switches automatically to the next** inserted reagents, in case of inconsistency LIAISON® XL recognizes position, expiration date and lot number of reagents loaded. **All the information is recorded automatically** during the process.



Maximize quality

LIAISON® XL **prevents sample carry over** due to adoption of single cavity reaction module (cuvette) and sample tips.

Both are in continuous loading and the software monitors the quantity on board. Single-cavity reaction cuvettes can be loaded with any orientation. In each sample are detected Clot and/or risk of insufficient Volume by pressure profile sensor. The high number of cuvettes and sample tips on board allows an high walk away system.



Easy to use and long walk way time

According with the IFU of each assay, most of the tests **don't require any daily maintenance**.

LIAISON® XL informs the user when maintenance is due and monitors the scheduled needs automatically. The Cabinet area of LIAISON® XL offers the **continuous loading** of System Liquid tanks and the **continuous unloading** of Liquids and Solid waste.

The high consumable volumes on board offer a long walk away time.

LIAISON® XL recognizes position and lot number of each bottle of **Starter Reagents** and upon exhaustion of a starter bottle, **it switches automatically to the next inserted bottle**, in case of lot consistency. The replacement is in **continuous loading** and extremely easy due to the "Clip-on" technology. All the information is **updated automatically** during the process.



By using functional icons that help the operator, the **LIAISON® XL Software** allows the laboratory to achieve a superior level of efficiency and a complete traceability of its activities. The communication between operator and instrument requires neither keyboard nor mouse.

Performance Monitoring

The software informs the operator about the **status of systems** (Stand by; Ready; Run) and the amount of reagents and consumable available on board.

Through the features **System Test Statistics** the operator is allowed to monitor all the Successful and the Failed samples or Control.

The system gives the user upfront estimation of the consumable volumes needed to perform the number of tests requested and allows the user to increase the consumable volume before starting or during the routine.

LIAISON® XL Software is connectable to LIS (Laboratory Information System) and offers a **Service remote access** with direct access from our central service to the system.

Traceability

All the activities planned and scheduled are **continuously monitored** and all the results, samples and calibrators and quality controls, **are traced**.

On every screen-page there is the **Help features**, that offer to the operator an **On-Line Operator Guide**.

TECHNICAL SPECIFICATIONS

OVERVIEW

System description	Random access or batch immunoassay system
Throughput	Up to 180 tests per hour
Time to first result	17 minutes - assay dependent
Assays on board	25

SAMPLES AND SAMPLE HANDLING

Sample racks	6-mm to 15-mm internal diameter. Up to 100-mm height
Sample capacity	120 samples, 12-position sample racks in a 10-lane sample area
Walk-away time	Approximately 6 hours
Stat handling	STAT may be assigned to any position in the sample area
Sample type	Serum / plasma / urine / CSF
Sample integrity control	<ul style="list-style-type: none">• Pneumatic-based level sensor• Aspirated/dispensed volume detection and flagging• Clot detection and flagging
Sample carryover	Absent due to the use of LIAISON® XL Disposable Tips

BARCODES

Sample tubes (all reading types may be active simultaneously)	EAN / Code 128 / Code 39 / Cod-a-bar / Interleaved 2 of 5
Control sera	2D barcodes recognized by hand-held scanner

REAGENTS AND REAGENT HANDLING

Reagent cooling	13°C ± 2°C / 52°F ± 59°F
Reagent integrity control	<ul style="list-style-type: none">• Radio Frequency identification (RFID)• Automatic inventory tracking and updating to integral RFID tag• Tracking of calibration validity• Tracking of on-board stability
Reagent capacity	25-position cooled storage for reagent integrals + 4 position cooled storage for reagent ancillaries

CONSUMABLE CAPACITY

Cuvettes	On board capacity: up to 1000
Disposable Tips	On board capacity: 576
DI Water	10-L container + 2-L reservoir
Wash Buffer	10-L container + 2-L reservoir
System cleaning solution	2-L container

WASTE CAPACITY

Solid waste
Liquid waste

Up to 2500 Disposable tips and cuvettes
A second container allows an instrument autonomy of 15 min
2 x 10-L containers

CONTINUOUS OPERATION

Loading/unloading of items
Running system operation

Includes:
Sample racks / Reagent integrals / Ancillaries / Cuvettes /
Disposable tips / Control racks / Wash liquid / System liquid /
Liquid waste / Solid waste / Starter reagents

USER INTERFACE

Operating system Monitor
UI

Microsoft® Windows®
17" diagonal LCD touch sensitive screen

- *Quick access to all pages*
- *Critical events and actions recorded*
- *Software-guided and logged maintenance*

RESULTS MANAGEMENT

Viewing and editing

- *Results available at all times*
- *Sort, search, filter (display customization available)*
- *Possibility of evaluation, validation and release of results prior to printing or LIS reporting*

Retest
Back-up
Privacy/safety

Retest always available, even automated based on predefined rules
Results can be stored manually or automatically
Compliant with privacy / safety regulations

QUALITY CONTROL

Package

Long-term monitoring including L-J graphs covering
Westgard and RiliBÄK rules

Access
File definitions

Accessible at all times
Available to users

ENVIRONMENTAL FEATURES

Operating temperature
Operating humidity
Electrical
Dimensions (excludes monitor and accessories)

15-32°C / 59°F ± 90°F
10%-85% RH non condensing
90-240V, 50-60 Hz
Height: 59 in or 150 cm
Width: 59 in or 150 cm
Depth: 36 in or 90 cm
LIAISON® XL 661 lbs or 300 kg (includes Monitor and Accessories)
63.9 dBA at operator normal position

Weight
Noise

LIAISON® XL DELIVERS VALUE



Fully automated solution

- Continuous loading of samples, reagents and consumables.

Quality of results

- Proven technology.

Flexible configuration

- DiaLink 3000 is the DiaSorin middleware to connect multiple LIAISON® offering a unique operator interface;
- LIAISON® XL is suitable for "point in space" connectivity to Laboratory Automation Systems.

High efficiency

- Long walk-away;
- High Throughput;
- Low maintenance.

Safe process

- Traceability;
- Avoid carry over;
- Remote assistance.

A Wide Range of Specialty Tests





M0870004248/D 12295 05/13

Product availability subject to required regulatory approval

The Diagnostic Specialist

DiaSorin S.p.A.
Via Crescentino, snc
13040 Saluggia (VC) Italy
Tel. +39 0161 487 526/947
Fax +39 0161 487 670
www.diasorin.com
info@diasorin.it